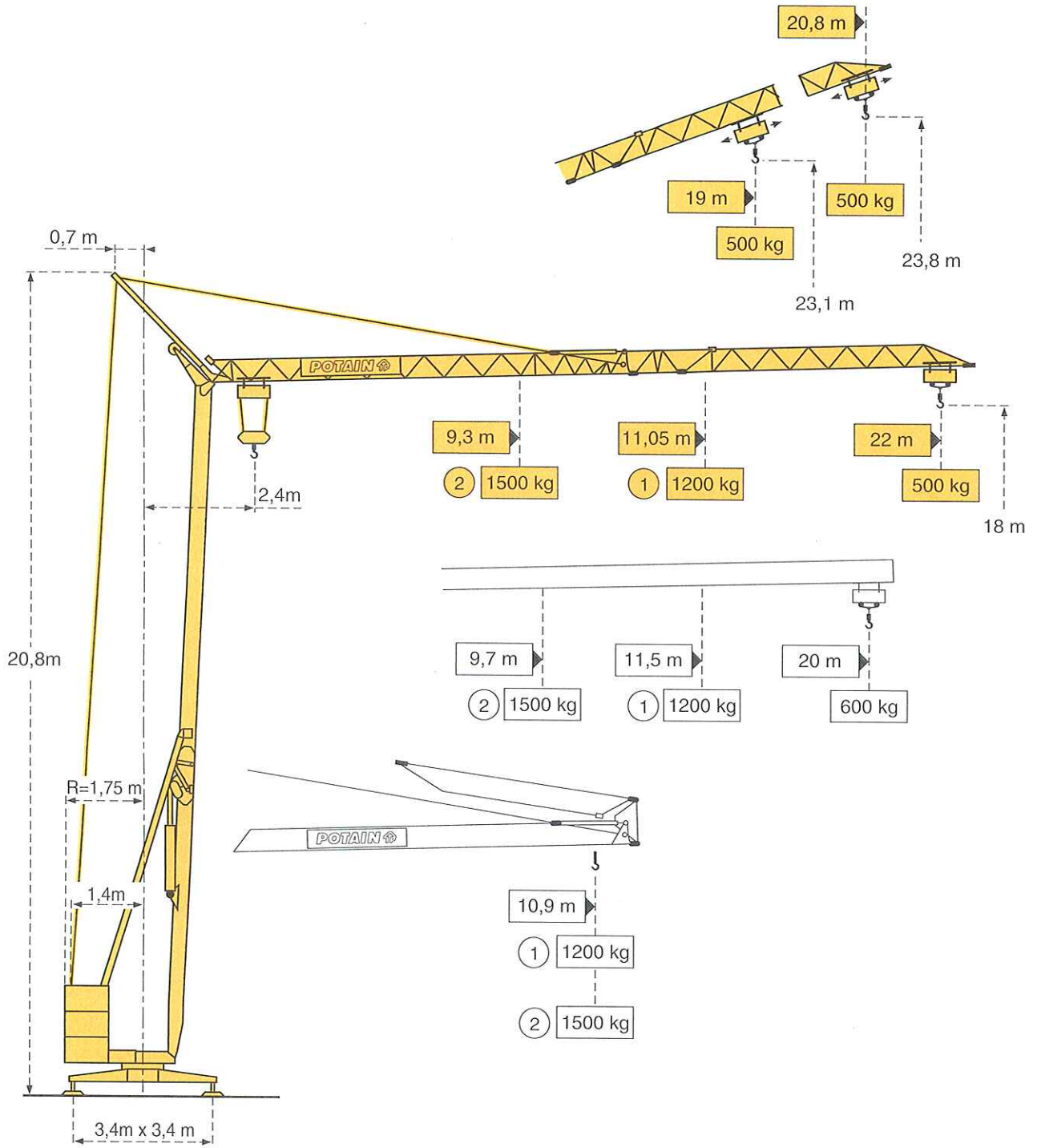


**GMR HD 14 B**

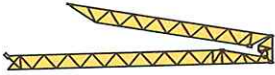


**GMR HD 14 B**

LKD 1



**Courbes de charges - Lastkurven - Load diagrams - Curvas de cargas - Curve di carico**



1 1200 kg

2,4 → 10,9 m  
22 m  1200 kg

11,05	12	13	14	15	16	17	18	19	20	21	22	m
1200	1080	980	890	815	750	700	650	605	565	530	500	kg

2,4 → 10,9 m  
20 m  1200 kg

11,5	12	13	14	15	16	17	18	19	20	m
1200	1140	1030	940	865	795	735	685	640	600	kg

2 1500 kg

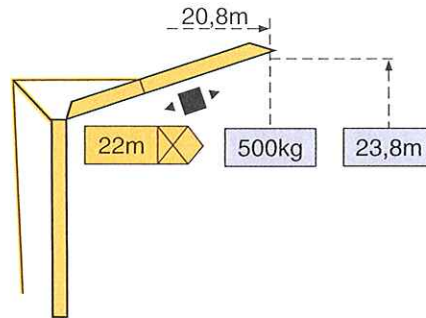
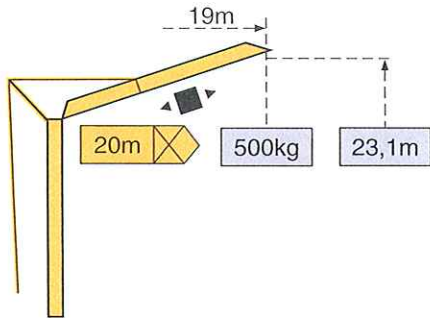
2,4 → 10,9 m  
22 m  1500 kg

9,3	10	11	12	13	14	15	16	17	18	19	20	21	22	m
1500	1360	1205	1080	980	890	815	750	700	650	605	565	530	500	kg

2,4 → 10,9 m  
20 m  1500 kg

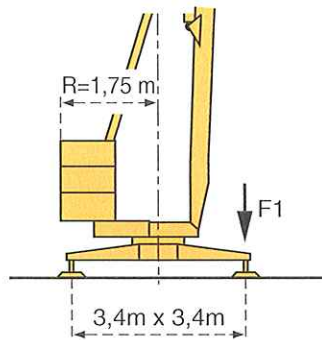
9,7	10	11	12	13	14	15	16	17	18	19	20	m
1500	1435	1275	1140	1030	940	865	795	735	685	640	600	kg


**Flèche relevée - Ausleger in Steilstellung - Luffing jib - Flecha izada - Braccio impennato**



◀ ■ ▶ Chariot distributeur Verfahrbare Laufkatze Traversing trolley Carro distribuidor Carrellino distributore

**Réaction - Eckdrücke - Reactions - Reacciones - Reazioni**



F1	● 9t	■ 6,1t
	6t	

● En service  
■ Hors service


● In Betrieb  
■ Ausser Betrieb


● In service  
■ Out of service


● En servicio  
■ Fuera de servicio


● In servizio  
■ Fuori servizio

 A vide sans lest ni train de transport avec flèche et hauteur maximum.

 Ohne Last, Ballast und Transportachse, mit Maximalausleger und Maximalhöhe.

 Without load, ballast or transport axles, with maximum jib and maximum height.

 Sin carga, sin lastre, ni tren de transporte, flecha y altura máxima.

 A vuoto, senza zavorra ne assali di trasporto con braccio massimo e altezza massima.



## Mécanismes - Antriebe - Mechanisms - Mecanismos - Meccanismi

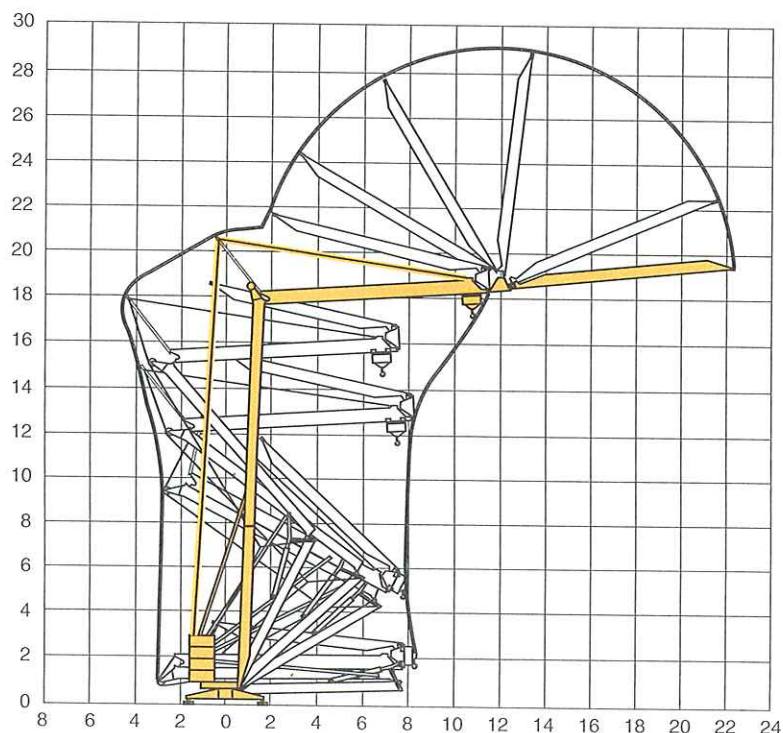
				m/mn	kg	ch -PS hp	kW	
Levage <i>Heben</i> Hoisting <i>Elevación</i> Sollevamento	① 6L2V6	400V		18	1200	6	4,4	
				36	600			
	① 6PC6	400V		4,5	1200	6	4,4	
				18	1200			
		② 6PC7	400V		9,5	1500	6	4,4
					19	1500		
Levage <i>Heben</i> Hoisting <i>Elevación</i> Sollevamento (230V/400V)	① 6LVF6	230V(1)		↑ 3,6	1200	5,5	4	
				↑ 12,5	1200			
				↑ 20	600			
				↓ 3,6	1200			
		400V		↓ 20	1200			
				↓ 36	600			
				↑ 3,6	1200			
				↑ 20	1200			
				↑ 36	600			
Distribution - <i>Katzfahren</i> - Trolleying <i>Distribución</i> - Distribuzione		230V/400V 400V	1 D1 V2	28		1,5 1	1,1 0,75	
Orientation - <i>Schwenken</i> - Slewing <i>Orientación</i> - Rotazione		RVF 20		0 → 1 tr/mn - U/min - rpm		1,4	1	
Réseau - <i>Netzstrom</i> - Mains supply - <i>Red</i> - Rete elettrica				50 Hz	CEI 38 IEC 38	(1) 230V(+6%-10%) 400V(+6%-10%)		
Puissance électrique nécessaire - <i>Anschlusswert</i> - Necessary electric power <i>Potencia eléctrica necesaria</i> - Potenza elettrica necessaria						(1) 230V : 6 kVA 400V : 9 kVA		
Groupe électrogène - <i>Stromaggregat</i> - Generator set - <i>Grupo electrogeno</i> - Gruppo elettrogeno						*		

(1) 230V 50 Hz Monophasé - *Einphasige* - Single phase - *Monofasica* - Monofase.

\*Nous consulter - *Auf Anfrage* - Consult us - *Consultarnos* - Consultateci

Conforme aux directives CEE 84/534 et 87/405 sur le niveau acoustique - *Gemäss EWG-Richtlinien 84/534 und 87/405 für den Schall- Leistungspegel*  
In compliance with the EEC 84/534 and 87/405 Instructions on noise level - *Conforme con las directivas CEE 84/534 y 87/405 sobre el nivel acustico*  
Conforme alle direttive CEE 84/534 e 87/405 sul livello acustico

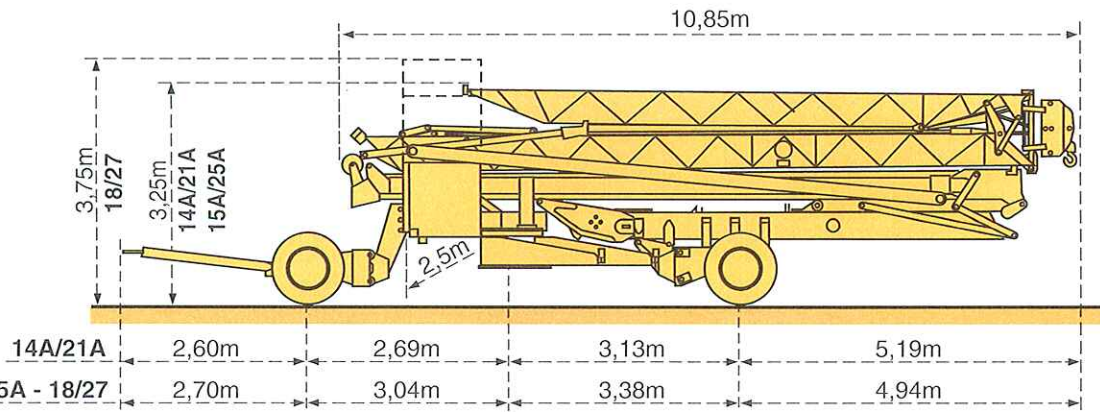
## Montage - Montage - Erection - Montaje - Montaggio



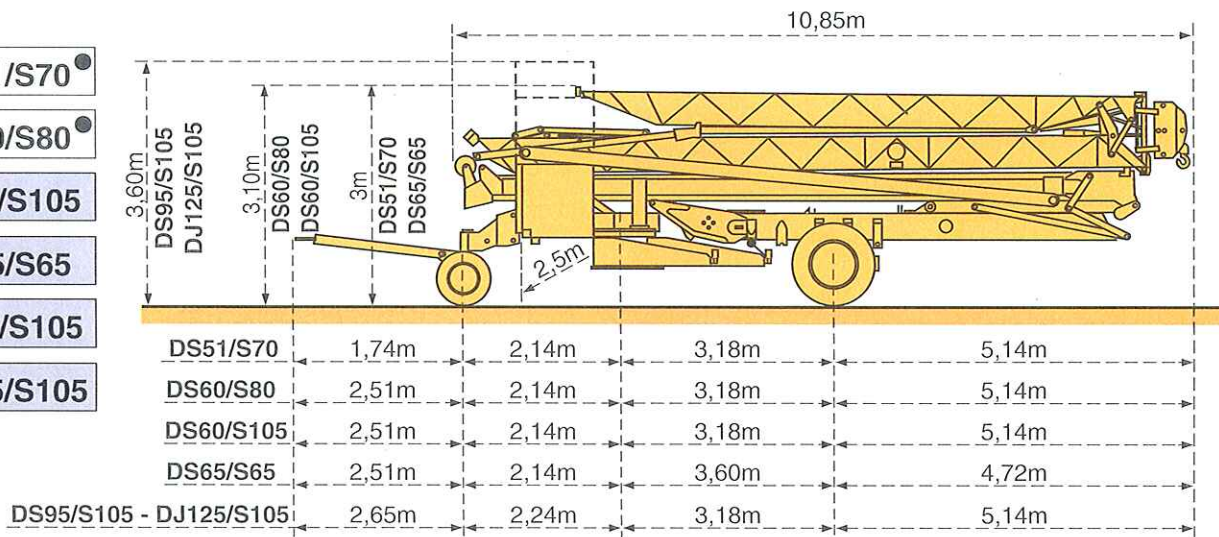
# Transport - Transport - Transport - Transporte - Trasporto

- 14A/21A
- 15A/25A
- 18/27

● Chantier  
Baustelle  
Site  
Obra  
Cantiere



- DS51/S70
- DS60/S80
- DS60/S105
- DS65/S65
- DS95/S105
- DJ125/S105



NF E 52081 - 82  
DIN 15018.H1 B3



## POTAIN

GRUPE LEGRIS INDUSTRIES

18.Rue de Charbonnières, B.P. 173-F 69132 ECULLY Cedex  
Tél. 72.20.20.20 - Fax 72.20.20.00

POTAIN GmbH	Deutschland	Tel : 06.105.704.0
POTAIN U.K.	Great Britain	Tel : 0895.44.52.61
Simma POTAIN	Italia	Tel : 02.97.96.71
POTAIN Portugal	Portugal	Tel : 02.968.08.89
POTAIN Belgium	Belgique	Tel : 15.42.08.80
Zhangjiagang POTAIN	China	Tel : 520.877.451

Copyright.Reproduction interdite © POTAIN 1996

GMR HD 14 B

Réf. 1996.23. LKD 1

Modificazioni riservate / Modificaciones reservadas / Subject to modification / Änderungen vorbehalten / Modifications réservées / Printed in France

Réalisation SODIPE